

**SECURITY MIRROR
INDUSTRIES LIMITED**

FIXED TILT STAINLESS STEEL
ANGLE FRAMED MIRROR

SERIES 3200

Fixed
Tilt

ANGLE FRAME

Frame is rigidly formed of 3/4" (19mm) X 5/8" (16mm) type 304, 18 gauge #4 brush finished stainless steel. All mitered corners are heliarc welded, ground smooth, and polished to #4 brush finish.

MIRROR

No.1 selected polished 5mm float glass with chemically deposited silver, electrolytically copper plated followed by a heavy coating of tough elastic paint. Mirrors conforming to CGSB 12.5-86 Type 1B, and guaranteed against silver spoilage for a period of ten years.

STOCK SIZES *

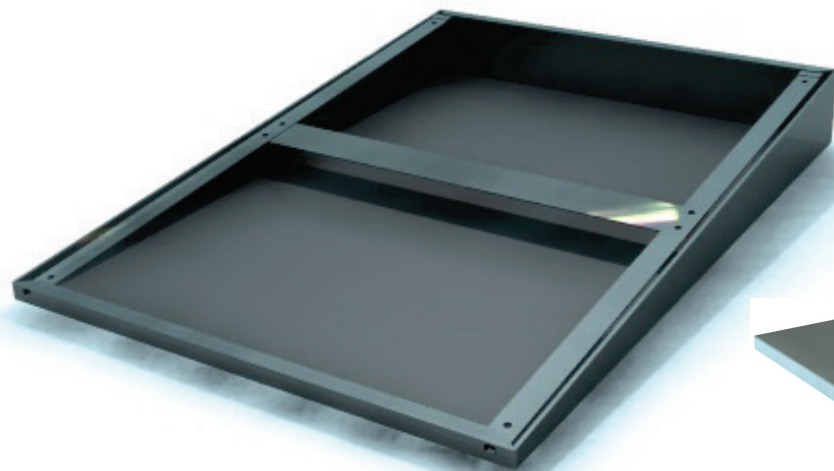
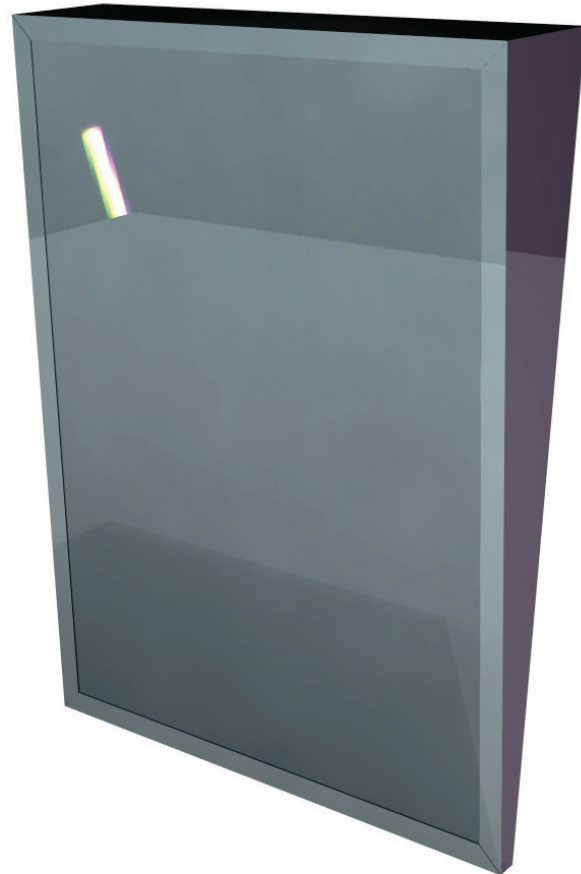
Width	Height
16" (406mm)	24" (609mm)
16" (406mm)	30" (761mm)
18" (457mm)	24" (609mm)
18" (457mm)	30" (761mm)
18" (457mm)	36" (914mm)
24" (609mm)	30" (761mm)
24" (609mm)	36" (914mm)

* Custom Sizes Available

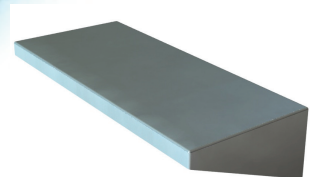
Weight: 5 lbs / sq. ft (NOT BOXED)

GLAZING OPTIONS

- Acrylic Mirror
- Tempered Mirror
- Laminated Mirror
- Stainless Steel Mirror
- 6mm Mirror



*BACK

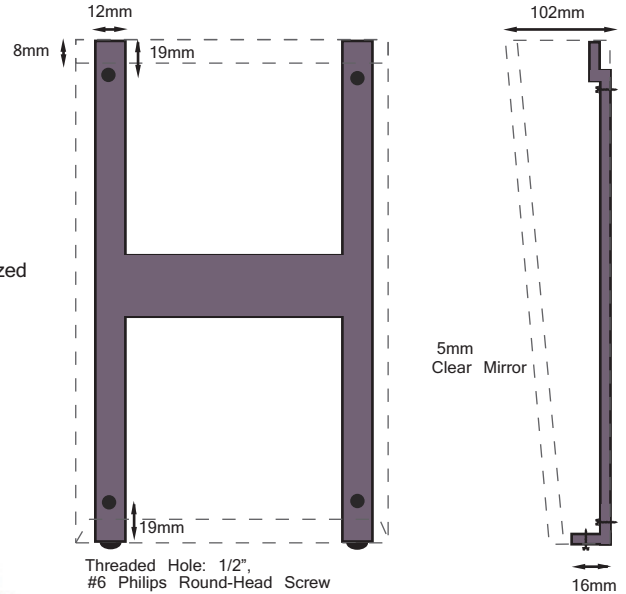


A stainless steel shelf, 5" (127mm) deep welded and polished with integral brackets is available for separate mounting below all mirrors.

FEATURES

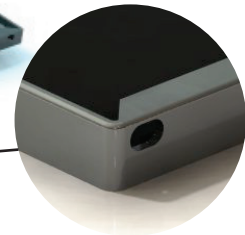
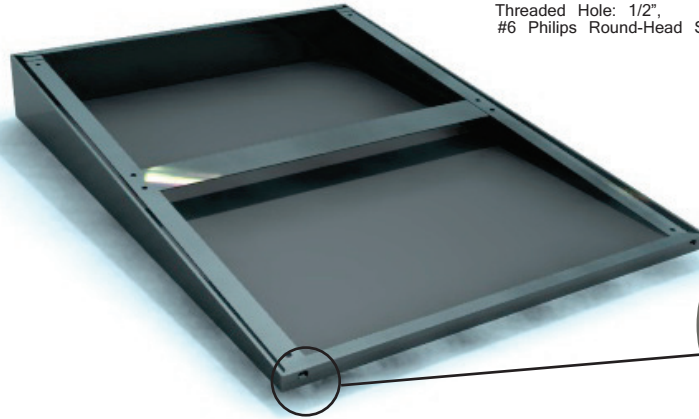
No.1 selected polished 5mm float glass with chemically deposited silver, electrolytically copper plated followed by a heavy coating of tough elastic paint. Mirrors conforming to CGSB 12.5-86 Type 1B, and guaranteed against silver spoilage for a period of ten years.

Mirrors to be taped, siliconed, suspension glazed with PVC blocks to have a minimum 3/8" (10mm) back free air space.



102mm (4")
TILT

Newly designed wall hanger (H bracket) formed of two verticals, 1/2" (12mm) 16 gauge satin coat steel and one horizontal, 1-1/2" (38mm) 24 gauge steel spot welded together. Fully conceals mechanical fixings ensuring a vandal resistant secure wall mounting.



Screw Slots
(Smaller than head of screw)

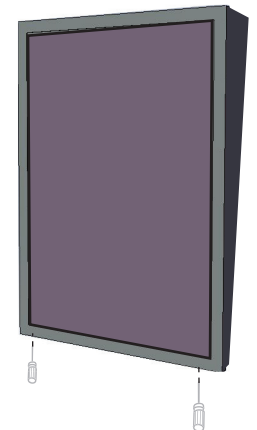
INSTRUCTIONS



1. Screw H bracket to wall.



2. Place top of mirror frame over top tabs of H bracket.



3. Screw bottom H bracket screws up until mirror frame fits over screws. Insert thin screw driver up through bottom holes in mirror frame and back H bracket, screw down until tight.